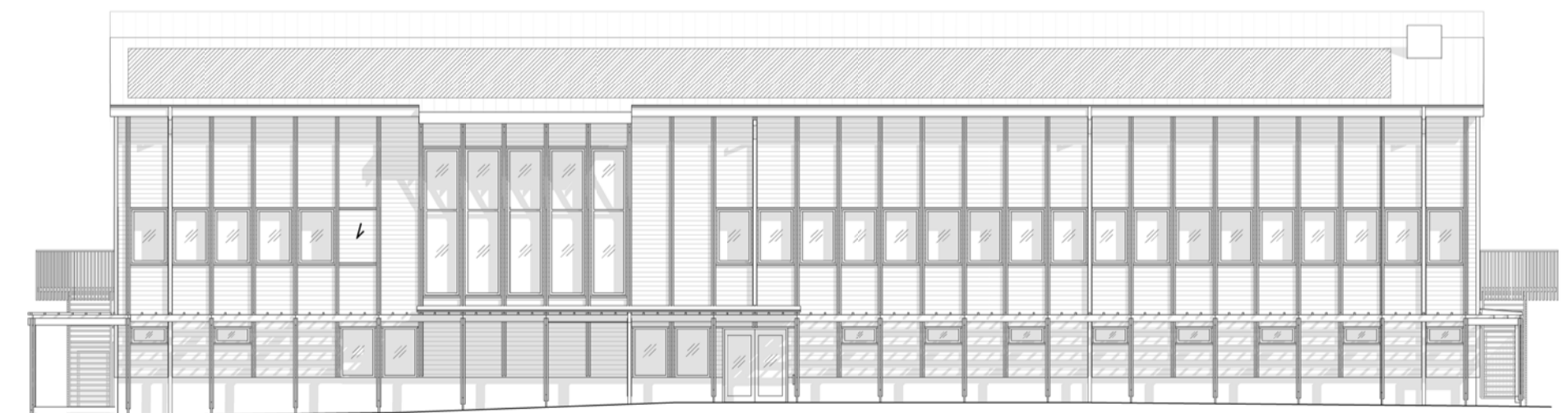
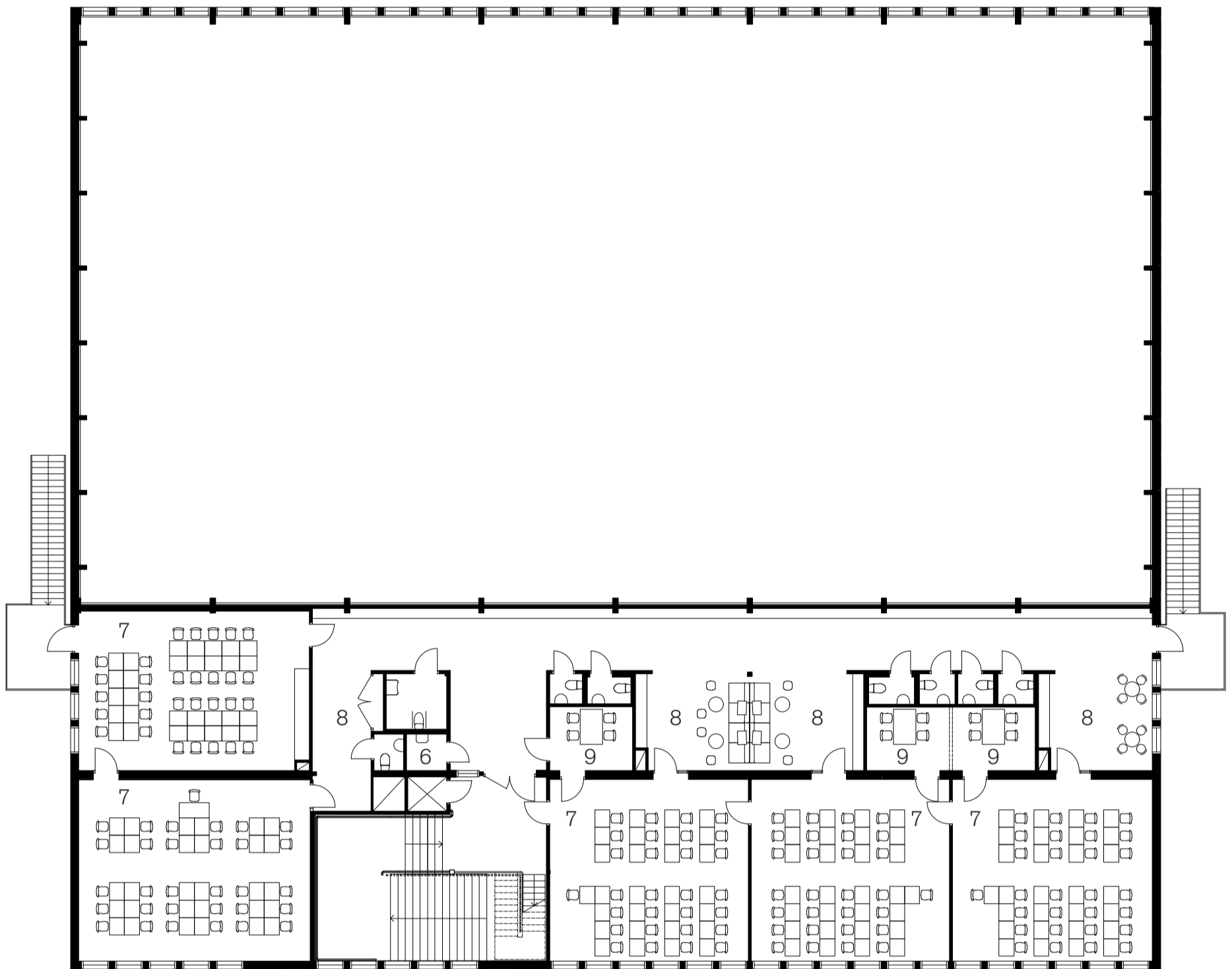


Plan 1 Grevhagsskolan / Skala 1:200

- | | |
|----------------|----------------|
| 1. Idrottshall | 6. Förråd/Städ |
| 2. Foajé | 7. Klassrum |
| 3. Kiosk | 8. Kapprum |
| 4. Arbetsrum | 9. Grupprum |
| 5. Omklädning | |

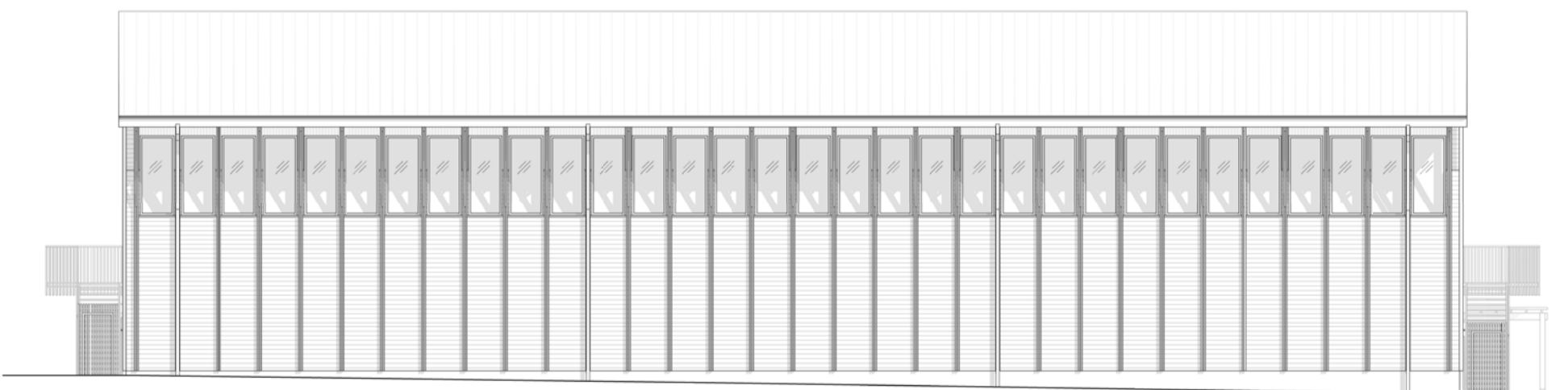


Fasad mot söder / Skala 1:200

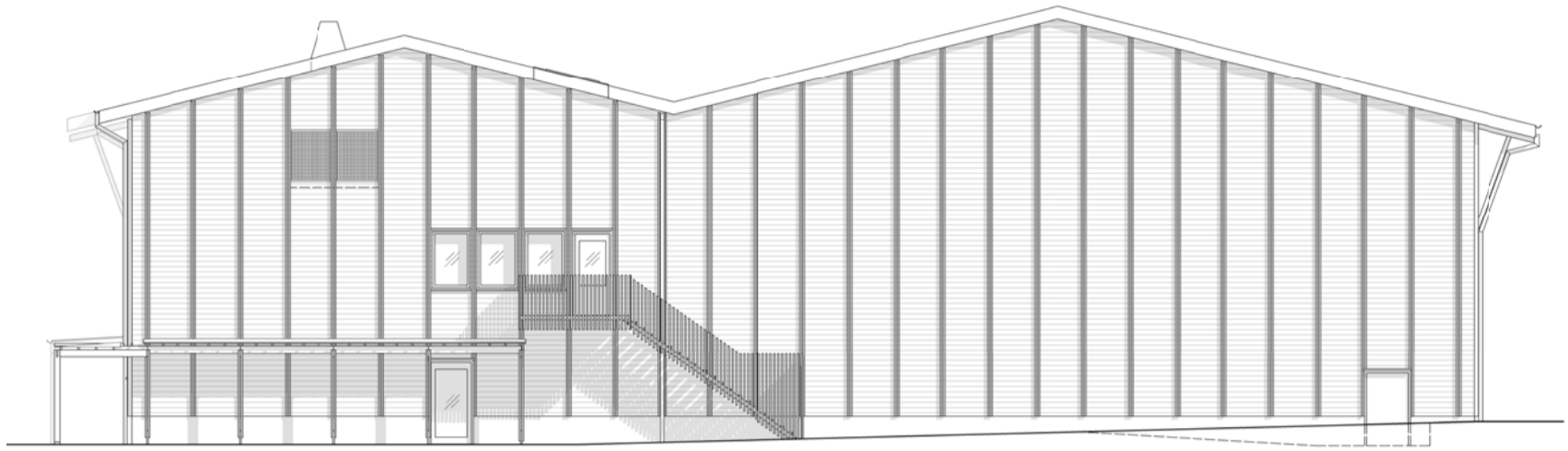


Plan 2 Grevhagsskolan / Skala 1:200

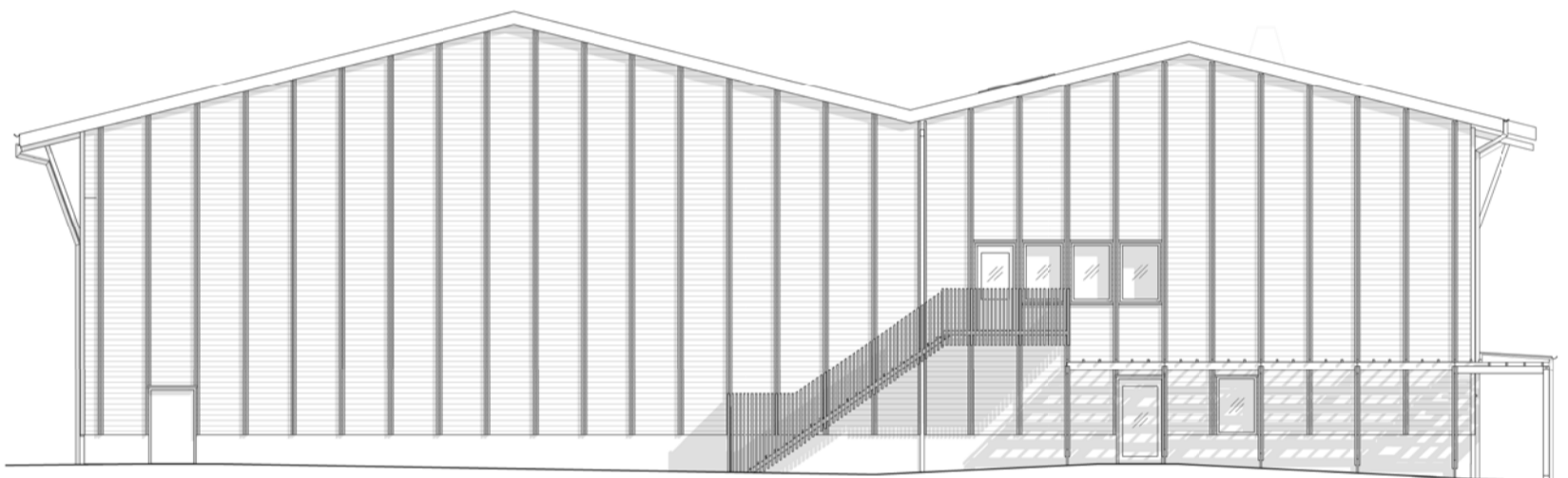
- | | |
|----------------|----------------|
| 1. Idrottshall | 6. Förråd/Städ |
| 2. Foajé | 7. Klassrum |
| 3. Kiosk | 8. Kapprum |
| 4. Arbetsrum | 9. Grupprum |
| 5. Omklädning | |



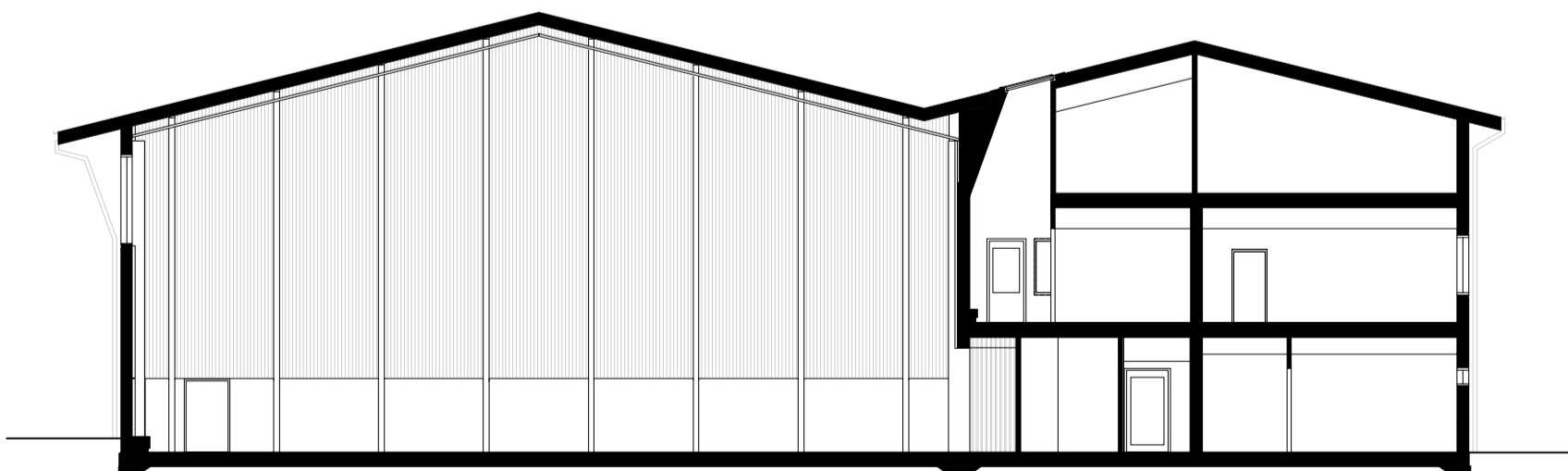
Fasad mot norr / Skala 1:200



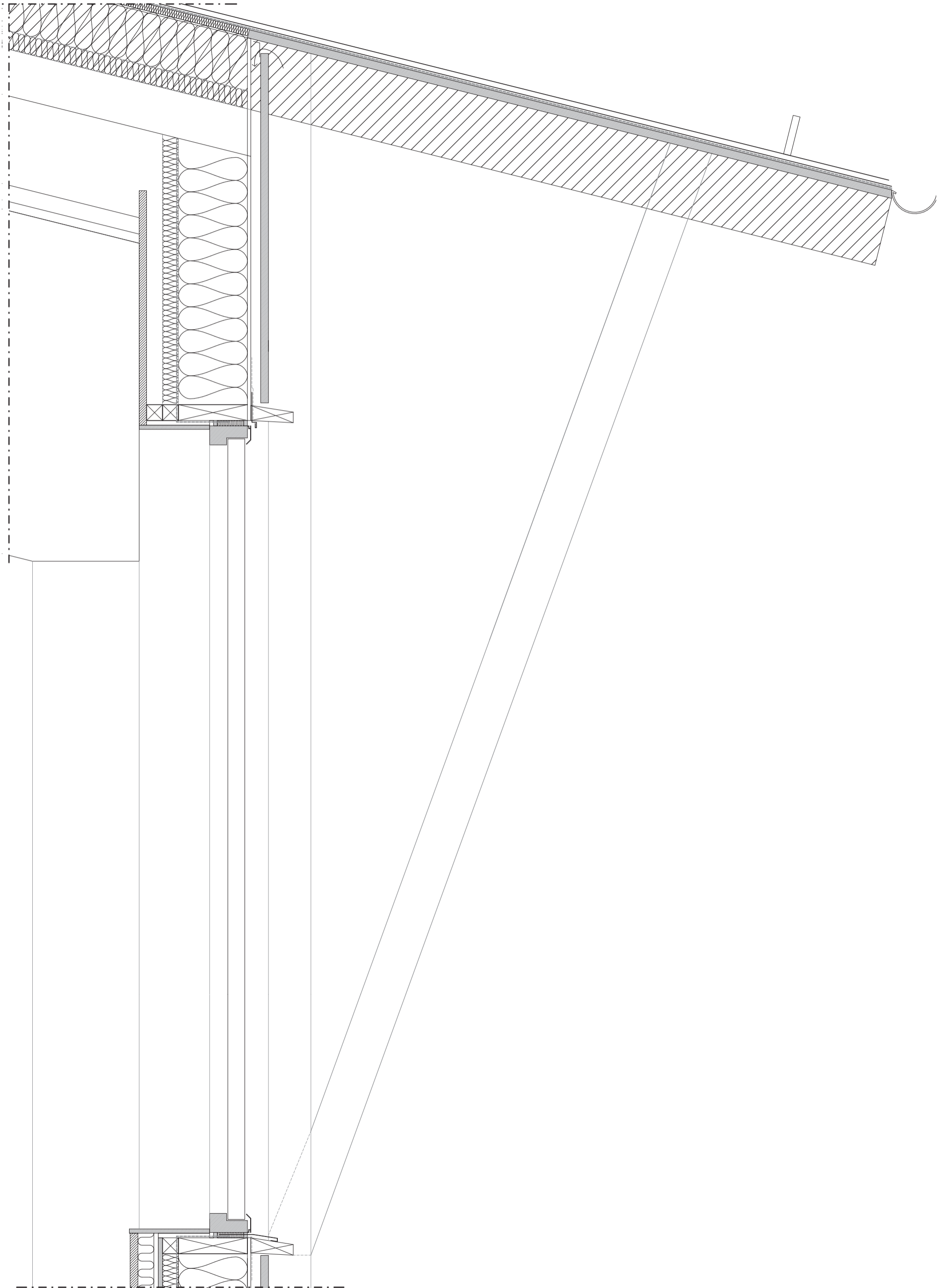
Fasad mot öster / Skala 1:200



Fasad mot väster / Skala 1:200

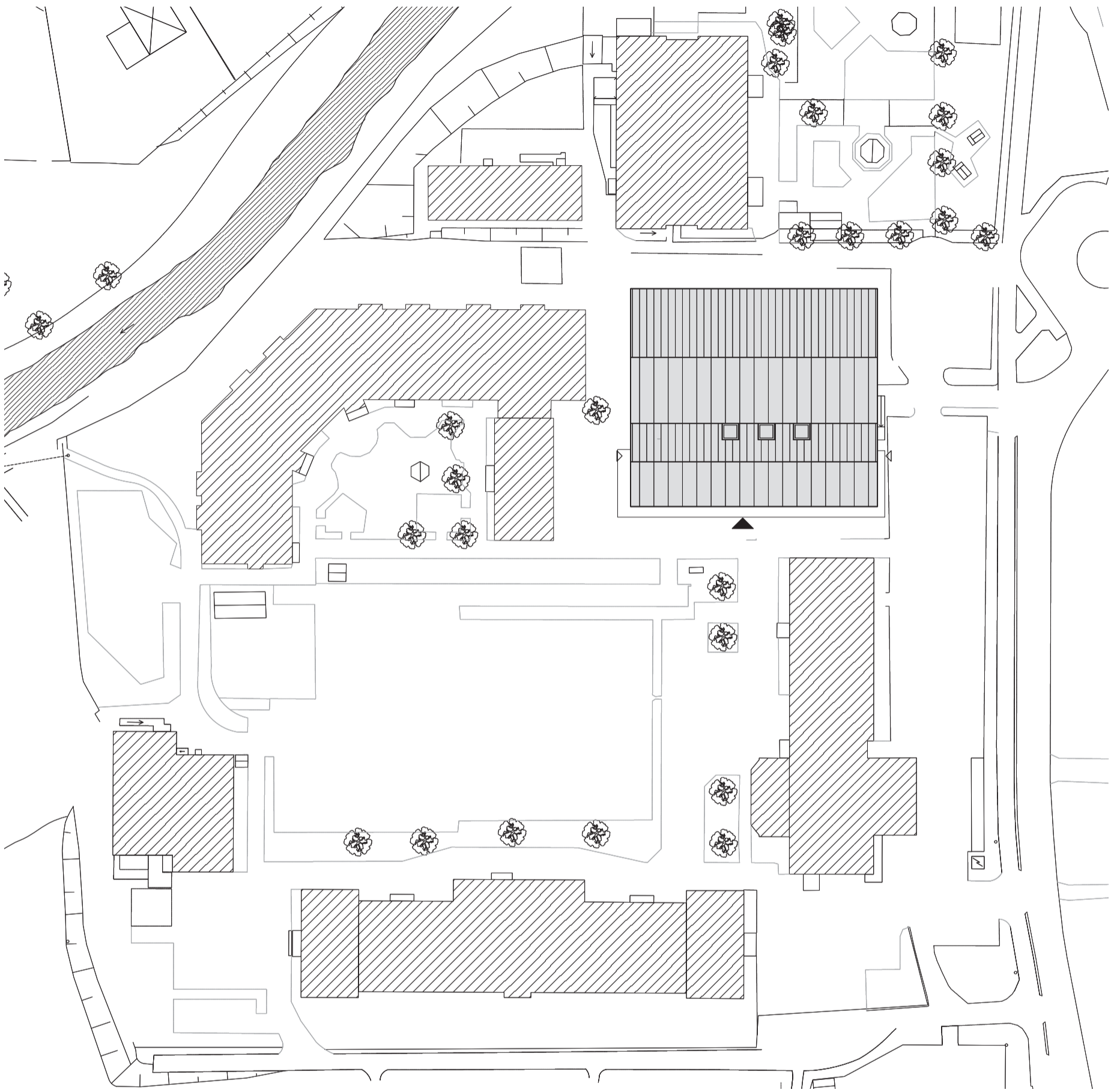


Sektion / Skala 1:200



Vertikalsnitt yttervägg / Skala 1:10

0 0,5



Situationsplan / Skala 1:800